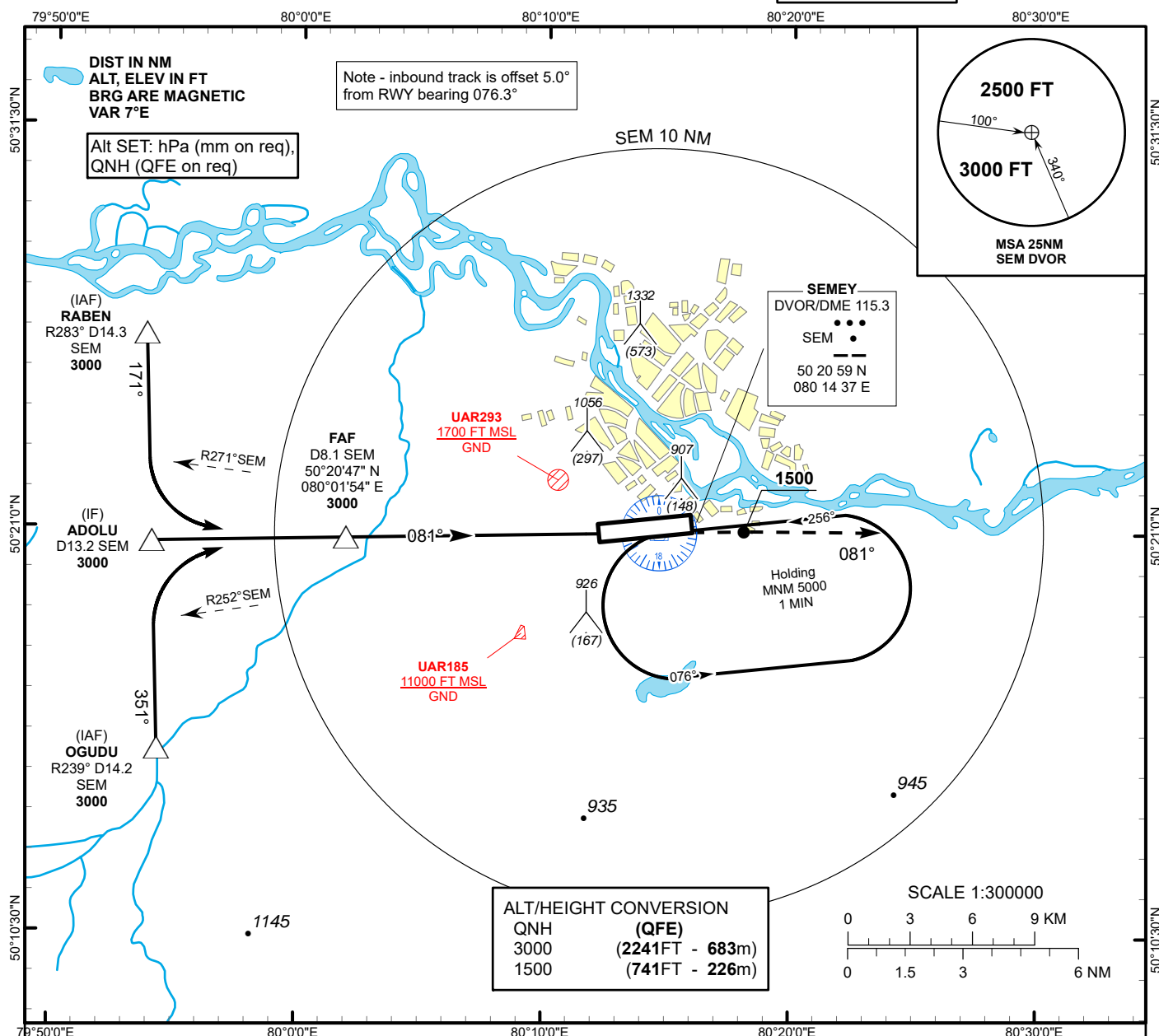


INSTRUMENT
APPROACH
CHART - ICAOAERODROME ELEV 759 FT
HEIGHTS RELATED TO
AD ELEVSEMEY TOWER 128.0
SEMEY ATIS (EN) 118.5
SEMEY ATIS (RU) 122.4SEMEY
VOR/DME Y
RWY 08IF
ADOLU
D13.2 SEM
3000FAF
D8.1 SEM
3000TRANSITION ALT
10000PDG 5.2% (3.0°)
081°MAPt
D1.9 SEM

MISSED APPROACH
Climb on track 081° to 3000. After
passing 1500 radar vectoring
will be provided. then as directed.
RADIO FAILURE: in case of RCF
climb to 5000 to SEM and join
holding pattern.

DVOR/DME
SEMELEV 759
THR RWY 08

12 11 10 9 8 7 6 5 4 3 2 1 0 -1 -2

Aircraft Category		A	B	C	D	DIST to THR	NM	6.9	5.0	4.0	3.0	2.0	1.0
Straight-in Approach OCA/H	VOR/DME	1120(360)		1120(360)		DME SEM	NM	8.1	6.2	5.2	4.2	3.2	2.2
						ALTITUDE	FT	3000	2400	2081	1763	1445	1127
						HEIGHT	FT	(2241)	(1641)	(1322)	(1004)	(686)	(367)

Aerodrome Operating Minima (MDH ft x RVR(CMV))	VOR/DME											
					GS	Kt	80	100	120	140	160	180
					FAF-MAPt (6.2)	min:sec	4:35	3:47	3:09	2:42	2:22	2:06
					Desc.Rate(5.2%)	ft/min	420	530	640	740	850	950

SEMEY
VOR/DME Y

AERONAUTICAL DATA TABULATION

VOR approach to RWY08 from RABEN, ADOLU, OGUDU	
Fix/point	Coordinates
(FAF) D8.1 SEM	50° 20' 46.9"N 080° 01' 54.3"E
ADOLU (IF) D13.2 SEM	50° 20' 38.9"N 079° 54' 01.0"E
RABEN (IAF) R283° D14.3 SEM	50° 26' 02.3"N 079° 53' 43.3"E
OGUDU (IAF) R239° D14.2 SEM	50° 15' 15.5"N 079° 54' 18.6"E
DVOR/DME SEM	50° 20' 58.7"N 080° 14' 37.5"E
THR RWY 08	50° 21' 00.82"N 080° 12' 43.63"E
Final approach descent angle is 3°	